



PARAGON Technologie GmbH, Systemprogrammierung

Heinrich-von-Stephan-Str. 5c • 79100 Freiburg, Germany

Tel. +49 (0) 761 59018201 • Fax +49 (0) 761 59018130

Internet www.paragon-software.com • E-mail sales@paragon-software.com

Paragon Drive Copy for Mac® OS X 8.0

Quick User Guide

Table of Contents

Features Overview	3
Key Features.....	3
User Friendly Fault Minimizing Interface	3
Backup Facilities	3
Restore Facilities	3
Copy Facilities	3
Auxiliary Facilities	4
Supported Technologies.....	4
Supported File Systems	4
Supported Media	4
Getting Started	7
Distribution	7
Online Distribution.....	7
Registration	7
How to Download Updates/Upgrades.....	8
Contacting Paragon Technology GmbH	8
System Requirements	9
Additional Requirements	9
Burning the Drive Copy for Mac OS X CD	9
Booting from the Drive Copy for Mac OS X CD.....	12
Startup Procedure.....	12
Copy Tasks	15
Cloning Hard Disks	15
Typical Scenarios	21
Backup Scenarios	21
Backing up a hard disk or partition to a network drive	21
Recovery Scenarios	23

Restoring a system partition from a network drive 23

Copying of data from the corrupted system disk to another hard disk 27

Burning of data from the corrupted system disk to CD/DVD 30

Copying of data from a backup to the corrupted system partition 33

Cloning System Hard Disk 37

P2P Scenarios 39

 Making Windows bootable on different hardware 39

Extra Scenarios 41

 Adding specific drivers 42

 Configuring network 43

 Saving log files 45

Introduction

Paragon Drive Copy For Mac OS X is a comprehensive tool of disk copying, upgrading and configuring needs. With the next generation of Paragon Adaptive Restore™, the product can also be used for migration of Mac OS X and Win2K+ physical systems to a different hardware platform. Moreover including the basic backup and restore facilities it can help you protect your system and data against a hardware failure, a virus attack, or a human mistake.

Most functionality of the product is offered through handy intuitive wizards, that's why not only IT pros, but also inexperienced users can find it easy and efficient.

In this manual you will find the answers to many of the technical questions, which might arise while using the program.



Our company is constantly releasing new versions and updates to its software, that's why images shown in this manual may be different from what you see on your screen.

Features Overview

FEATURES OVERVIEW

This chapter dwells upon key benefits and technical highlights of the product.

KEY FEATURES

Let us list some of the key features:

USER FRIENDLY FAULT MINIMIZING INTERFACE

- **Graphical representation of the data** to gain a better understanding.
- **A handy launcher** to easily find and run the required tasks.
- [Comprehensive wizards](#) to simplify even the most complex operations.
- **A context sensitive hint system** for all functions of the program.
- **Previewing the resulting layout of hard disks before actually executing operations** (so-called virtual operations).

BACKUP FACILITIES

- [Support of basic techniques to store backup images:](#)
 - Backup to local mounted partitions;
 - Backup to a network drive to stand a better chance of success in case of a hard disk failure.
- [Sector backup](#) to save not only all on-disk information but also the system service structures. It is ideal for making a *backup image* of an entire hard disk or system partitions to guarantee the operating system's working capability.

RESTORE FACILITIES

- [Restore an entire disk, separate partitions](#) or [only files you need](#) from the previously created backup image.
- [Adaptive Restore](#) to successfully migrate a Win2K+ physical system to a different hardware platform (P2P) by allowing automatic injection of all required

COPY FACILITIES

- [Partition/hard disk copy](#) to successfully transfer all on-disk information including standard bootstrap code and other system service structures, thus maintaining the operating system's working capability.



Copy functionality can also be used as an alternative way of data protection.

AUXILIARY FACILITIES

- **File Transfer Wizard** to make such operations as transferring of files/directories or burning of them to CD/DVD as easy and convenient as possible. Providing access to Paragon backups as regular folders, it may also help to replace corrupted data from a previously created image in case of an operating system failure.
- [Network Configuration Wizard](#) to establish a network connection under Linux or WinPE either to save a backup of a partition/hard disk or just several files on a network computer or retrieve a previously made backup from a network computer for recovery purposes.
- [Boot Corrector](#) to fix most of the system boot problems that can be a result of a human factor, program error or a boot virus activity.

SUPPORTED TECHNOLOGIES

Along with using innovative technologies from outside, Paragon has developed a number of its own original technologies that make its products unique and attractive for customers:

- **Paragon Adaptive Restore™** technology to successfully migrate a Win2K+ physical system to a different hardware platform (P2P).
- **Paragon Power Shield™** technology to provide data consistency in case of a hardware malfunction, power outages or an operating system failure.
- **Paragon UFSD™** technology to browse partitions of any file system including hidden and unmounted, modify and copy files and folders, etc.
- **Paragon Smart Partition™** technology to securely perform hard disk partitioning operations of any complexity.
- **GUID Partition Table (GPT)**. It is the next generation of a hard disk *partitioning scheme* developed to lift restrictions of the old MBR. GPT disks are now supported by Windows Vista/7, Server 2008, Mac OS X and Linux.

SUPPORTED FILE SYSTEMS

Paragon Drive Copy 10.0 provides support of major file systems presented on the market today:

- Full read/write access to FAT16/FAT32 partitions.
- Full read/write access to NTFS (Basic and all five types of Dynamic Disks) under Windows 95/98/ME, Linux and PTS DOS. Compressed NTFS files are also supported.
- Full read/write access to Ext2FS/Ext3FS/Ext4FS partitions under all versions of Windows, DOS 5.0 and later.
- Limited read/write access to Apple HFS+ partitions.



Unfortunately, support of non-Roman characters for the HFS+ file system is unavailable at the moment. The company is about to implement it in the nearest future.

SUPPORTED MEDIA

- Support of both MBR and GPT hard disks (up to 2 TB tested)

- IDE, SCSI and SATA hard disks
- CD-R, CD-RW, DVD-R, DVD+R, DVD-RW, DVD+RW, DVD-R, DVD+R double layer and also Blu-ray discs
- FireWire (i.e. IEEE1394), USB 1.0, USB 2.0 hard disks
- PC card storage devices (MBR and GPT flash memory, etc.)

Getting Started

GETTING STARTED

In this chapter you will find all the information necessary to get the product ready to use.

DISTRIBUTION

Paragon Drive Copy for Mac OS X is distributed as downloadable package over the Internet at the company's web-site.

ONLINE DISTRIBUTION

Drive Copy for Mac OS X purchased over the Internet will be in form of an DMG package. After completing the special burn wizard you can boot from created CD or DVD.

REGISTRATION

Paragon Technology GmbH provides a wide range of online services through its web-portal - www.paragon-software.com/support/:

- Registration of new users;
- Registration of purchased products for registered users;
- Available around-the-clock downloading center, where registered users can get product updates/upgrades as well as all the necessary documentation;
- Downloadable free demo versions and open documentation for all users.



It is recommended to use Internet Explorer 5+ or any compatible browser.

TO REGISTER AS A NEW USER

To register as a new user, please do the following:

1. Run an Internet browser and visit the page: www.paragon-software.com/my-account/;
2. Click **Create** of the **Create a Paragon Account** section;
3. Fill out a registration form;
4. Click **Register**.

The most important field in the form is an E-mail address, as it serves as a login to enter the system. Besides your access password will be sent to this address as well.

TO REGISTER A NEW PRODUCT

If you are a registered user and would like to register Partition Manager 10, please do the following:

1. Run an Internet browser and visit the page: www.paragon-software.com/my-account/;
2. In the **Email** field of the **Authorization** section, enter an E-mail used for registration;
3. In the **Password** field enter a password received after registration;
4. Click **Sign in**;
5. If the user name and password are valid, you will get to your account;
6. Click **Register new product** of the **Products** section;
7. Enter your product *serial number* in the **Serial Number** field. You can find it in the product box or obtain from your reseller. Click **Next**;
8. On the next page you will be asked to provide some additional data. Also you will need to decide whether you want to get confirmation on registering the product by E-mail or not. Click **Next**, and then click **Finish**.

That is all. The product is now registered.

HOW TO DOWNLOAD UPDATES/UPGRADES

Downloading of updates/upgrades can be fulfilled in the following way:

1. Run an Internet browser and visit the page: www.paragon-software.com/my-account/;
2. In the **Email** field of the **Authorization** section, enter an E-mail used for registration;
3. In the **Password** field enter a password received after registration;
4. Click **Sign in**;
5. If the user name and password are valid, you will get to your account;
6. Select **My Downloads** of the **Products** section to see what updates are available for you;
7. Select the desired update and click **Download**.

CONTACTING PARAGON TECHNOLOGY GMBH

If you have any questions about the company products, please do not hesitate to contact Paragon Technology GmbH.

Service	Contact
Visit Paragon GmbH web site	www.paragon-software.com
Registration & updates web-service	www.paragon-software.com/support
Knowledge Base & Technical Support	kb.paragon-software.com

SYSTEM REQUIREMENTS

To use the Drive Copy for Mac OS X CD on your computer, (it doesn't matter what operating system is installed), make sure that it meets the following minimum system requirements:

- Intel CPU
- At least 512 MB of RAM

ADDITIONAL REQUIREMENTS

There may be additional requirements if you want to use advanced features:

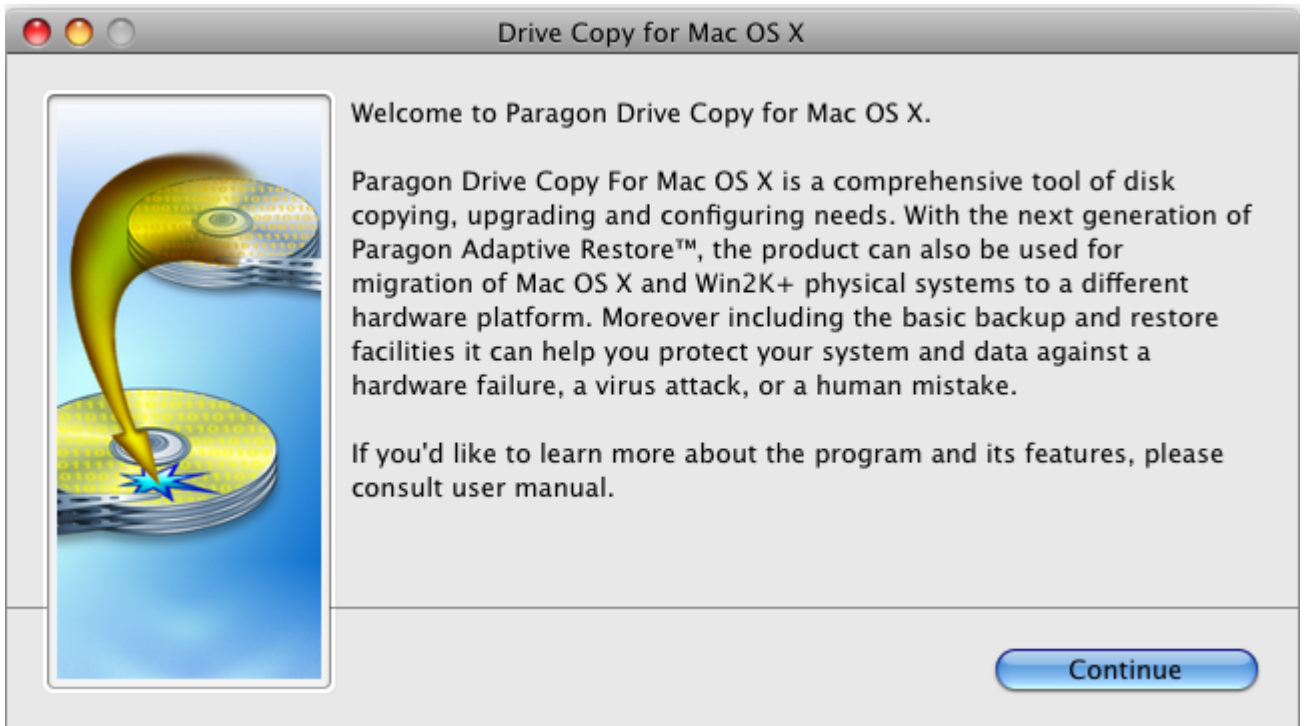
- Network card is required to send partition/hard disk backups to a network computer or to retrieve previously made backups
- Recordable CD/DVD drive is needed to burn data to compact disks
- To save copy or backup of a hard disk or partition, removable USB disks can be used. The program supports USB Drives 1.0, 2.0.

BURNING THE DRIVE COPY FOR MAC OS X CD

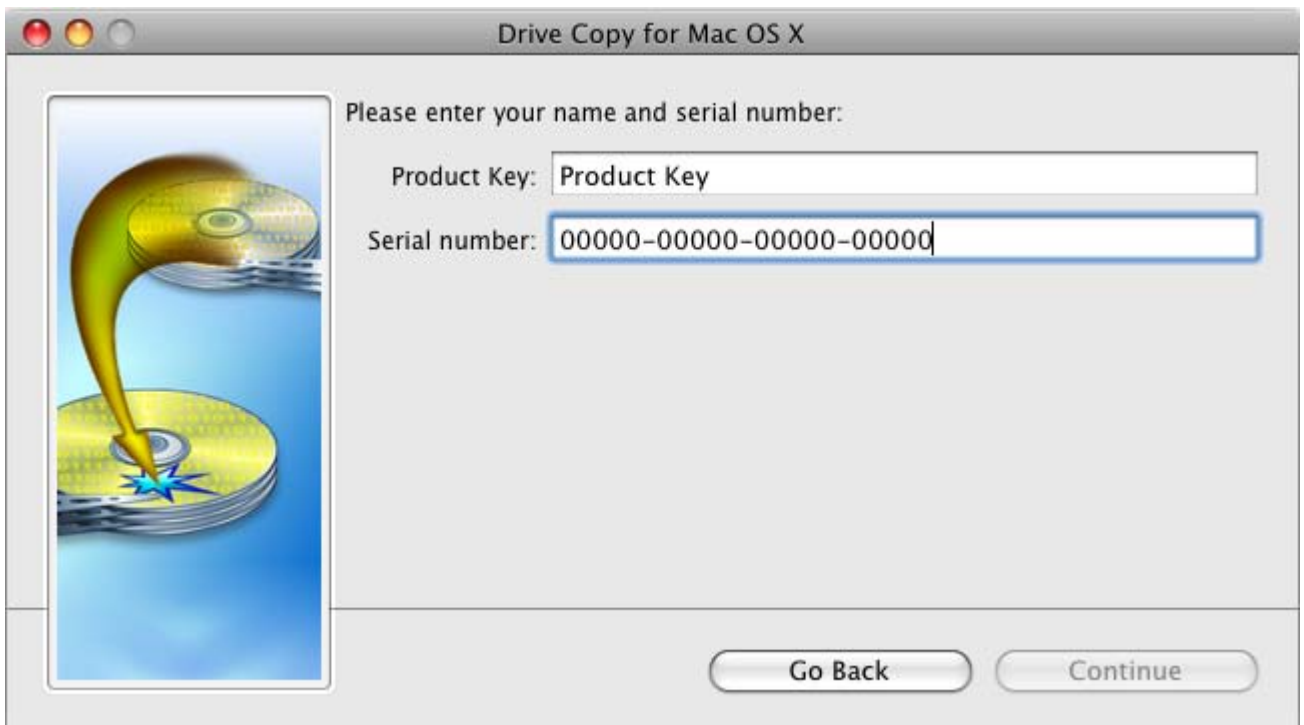
1. Click on the supplied DMG disk image, then launch **Paragon Drive Copy for Mac OS X**.



2. Read the information on the welcome page, then click **Continue**.



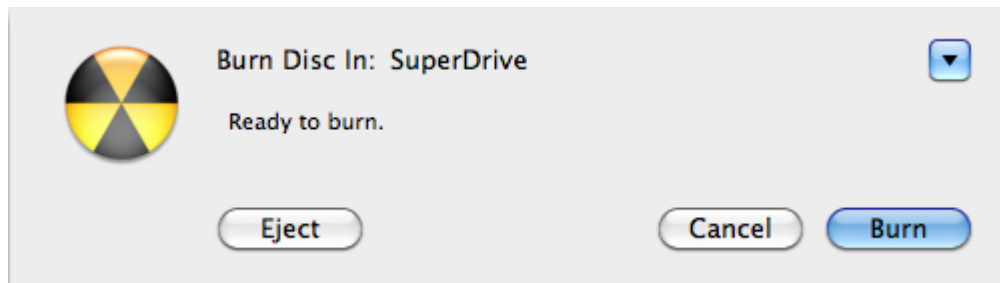
3. Enter your product key and serial number, then click **Continue**.



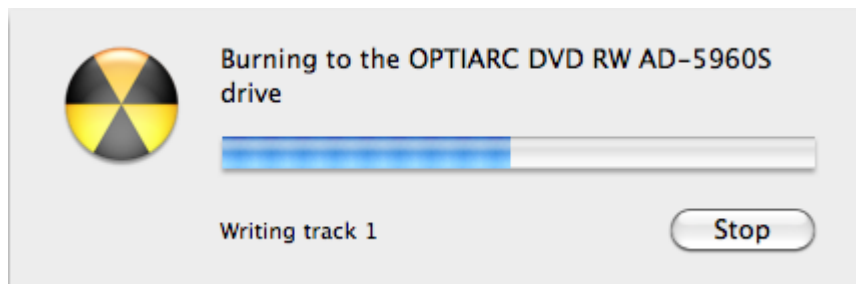
4. Insert a blank or re-writable CD/DVD disc into your drive, then click **Burn**.



5. Confirm the operation.



6. The burning operation is in progress.



7. Click **Close** when the operation is over.



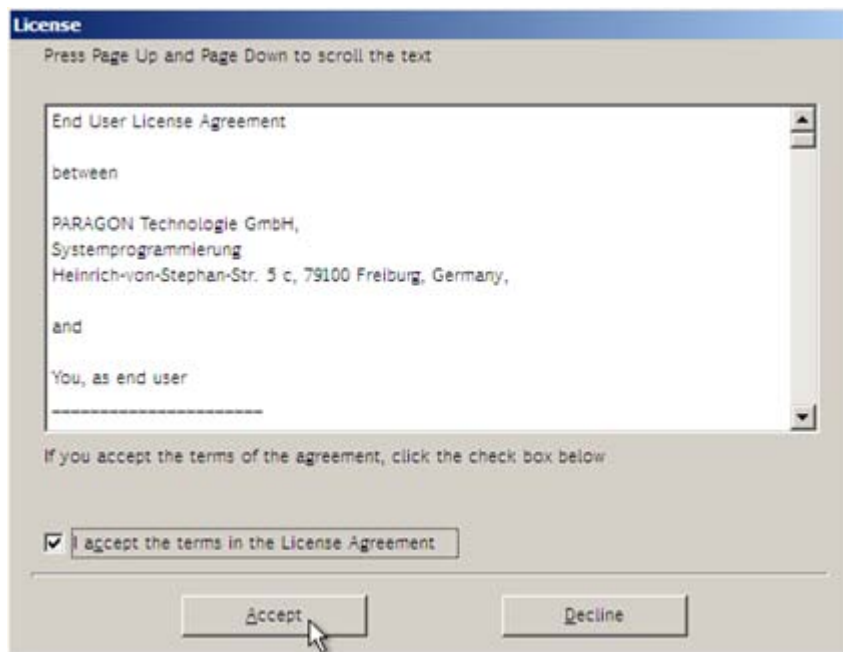
8. Restart your Mac into our Linux-based environment by keeping **ALT** pressed during the system startup to select CD as the first boot device.

BOOTING FROM THE DRIVE COPY FOR MAC OS X CD

STARTUP PROCEDURE

To start working with the WinPE Recovery CD, please take the following steps:

1. Insert the WinPE Recovery CD into a CD/DVD drive.
2. Reboot the computer and select this CD as startup device.
3. After the disc has been loaded, you will see the License Agreement. Read the agreement and then mark the appropriate checkbox to accept. If you do not agree with any conditions stated there, you won't be able to use the program.



4. Once you accept the agreement, you will see the Universal Application Launcher. In general it enables to run components of the product, load drivers for undefined hardware or establish a network connection.



5. Click on the required operation to start. Hints on the selected at the moment item will help you make the right choice.
6. Consult the help system by pressing **ALT+F1** to know more on the subject.

Components

COPY TASKS

In this chapter you will find all the information necessary to make a copy of a hard disk or a separate partition.

CLONING HARD DISKS

You can clone a hard disk of any file system. During the hard disk copying process, the program moves controlling records of used *partitioning scheme*, the bootstrap code and on-disk partitions. That's why this operation cannot be substituted by simply copying all on-disk partitions.

COPY HARD DISK WIZARD

The Copy Hard Disk Wizard is a traditional-like wizard. By going through its steps, you configure all the necessary settings to launch the copy operation. To minimize the possibility of making any mistake, the wizard provides auxiliary information on every single option. Moreover you can get an in-depth description to any setting, control, or field of the wizard just by clicking the hint button and then the object you need.



You need at least two hard disks to carry out this operation.

STARTUP

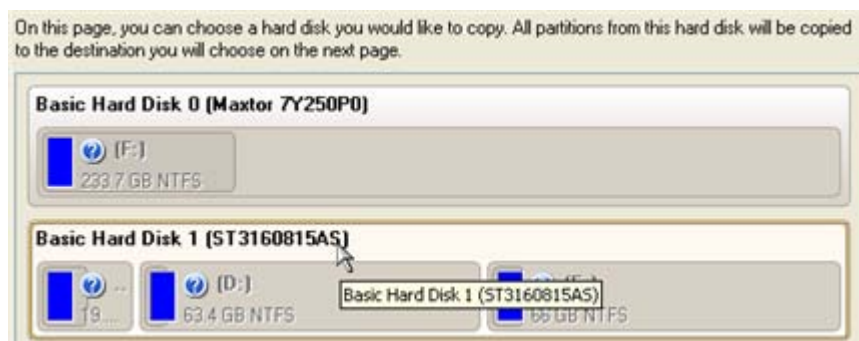
There are several ways to start the Copy Hard Disk Wizard:

- In the Main Menu: select **Wizards > Copy Hard Disk...**
- On the Common Tasks Bar: click the **Copy Hard Disk** item of the Wizards menu.
- In the Toolbar: click the **Copy Hard Disk** button.

SETUP

The wizard offers the following steps to accomplish the copy hard disk operation:

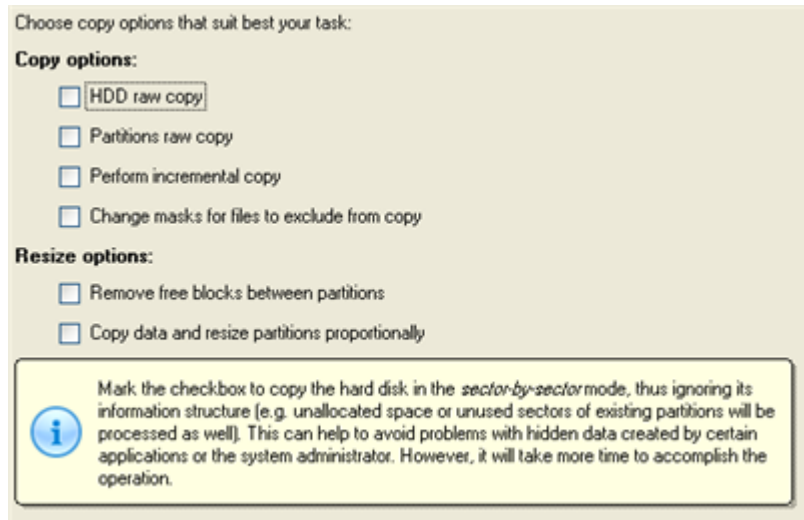
- **The hard disk to copy.** Select a hard disk you want to copy.



- **The target hard disk.** Select a hard disk (if several) where all data of the source disk will be copied to.



- **Copy parameters.** The wizard enables to specify the following options:



Copy options

- **HDD raw copy** to copy the hard disk in the sector-by-sector mode, thus ignoring its information structure (e.g. unallocated space or unused sectors of existing partitions will be processed as well). This can help to avoid problems with hidden data created by certain applications or the system administrator. However, it will take more time to accomplish the operation.
- **Partition raw copy** to copy the on-disk partitions in the sector-by-sector mode to successfully process unknown file systems. However it is not recommended to enable this option when working with supported file systems as it takes more time to accomplish the operation.
- **Perform incremental copy** to only copy changes on the hard disk from the moment of the last copy operation. The program will perform comparison between a previous copy of the hard disk and its current state. Only sectors that are different will be updated, thus considerably decreasing the amount of data to write.
- **Change masks for files to exclude from copy** to manage contents of the resulted duplicate. By default the program will take into account exclude filters set in the Settings dialog. If you need to change them, please mark the checkbox and specify additional filters on the next page of the wizard.

Resize options

- **Remove free blocks between partitions** not to keep blocks of free space between partitions on the targeted hard disk.
- **Copy data and resize partitions proportionally** to make the program proportionally change the size of partitions keeping their relative order intact. The option can be useful when upgrading the hard disk to a larger one.

Verification options

This section allows you to define whether the **Surface** and/or the **Writing verification** tests will be accomplished during the operation.

RESULT

After the operation is completed, you receive a fully functional duplicate of the existing hard disk.



To make a Win2K+ operating system bootable on different hardware, please additionally complete the [Adjust Windows® to boot on new Mac](#).

Available operation scenarios:

- [Cloning System Hard Disk](#)

CLONING PARTITIONS

You can duplicate partitions to protect oneself from downtime in case of a system malfunction or for cloning sample partitions. The program enables to duplicate all partition data including files, the exact structure of directories and *file system metadata* (location of files, security information, access quotas, etc.).

The Copy Partition Wizard will help you copy a partition of any file system. To minimize the possibility of making any mistake, the wizard provides auxiliary information on every single option. Moreover you can get an in-depth description to any setting, control, or field of the wizard just by clicking the hint button and then the object you need.

STARTUP

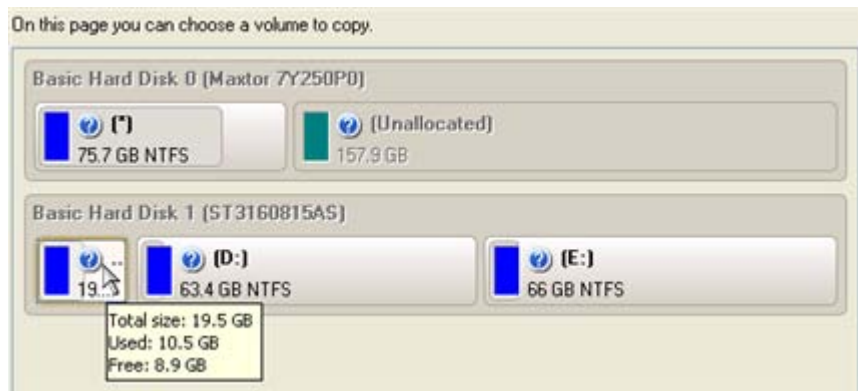
There are several ways to start the Copy Partition Wizard:

- In the Main Menu: select **Wizards > Copy Partition...**
- On the Common Tasks Bar: click the **Copy Partition** item of the Wizards menu.
- In the Toolbar: click the **Copy Partition** button.

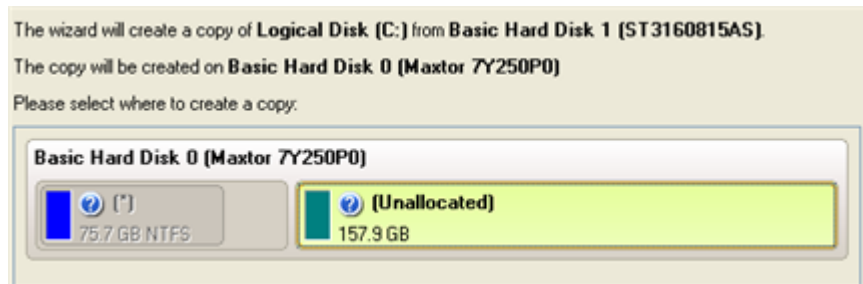
SETUP

The wizard offers the following steps to accomplish the copy partition operation:

- **The partition to copy.** Select a partition you want to copy.

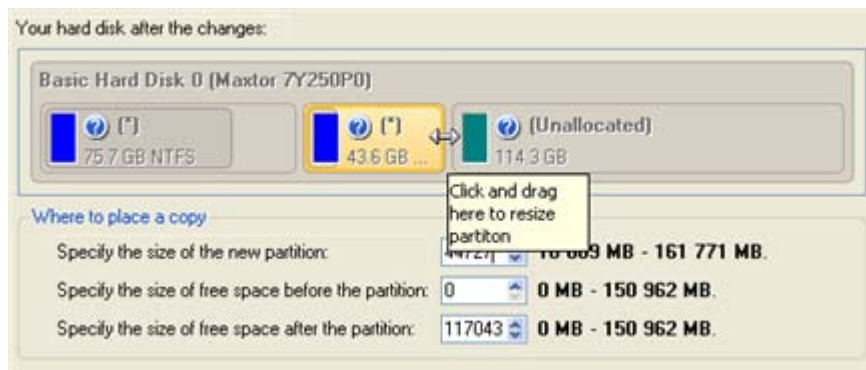


- **Destination disk.** Select a hard disk with enough unallocated space to perform the operation.



The program enables to copy a partition to a block of free space, which is smaller than the partition itself, taking into account only actual amount of data.

- **Copy parameters.** The wizard enables to specify the following options:



- **Partition size.** Define the size (in Mb) of the copied partition.
- **Free space before.** Define the position (in Mb) of the copied partition relative to the beginning of the available range of disk space.
- **Free space after.** Define the amount of trailing free space (in Mb) at the end of the available range of disk space.



Partition size and position may also be defined by using the drag-and-drop technique. To do that, just carry out the required operation on the Disk Map.

RESULT

After the operation is completed you receive a fully functional duplicate of the existing partition.



To make a Win2K+ operating system bootable on different hardware, please additionally complete the [Adjust Windows® to boot on new Mac](#).

Typical Scenarios

TYPICAL SCENARIOS

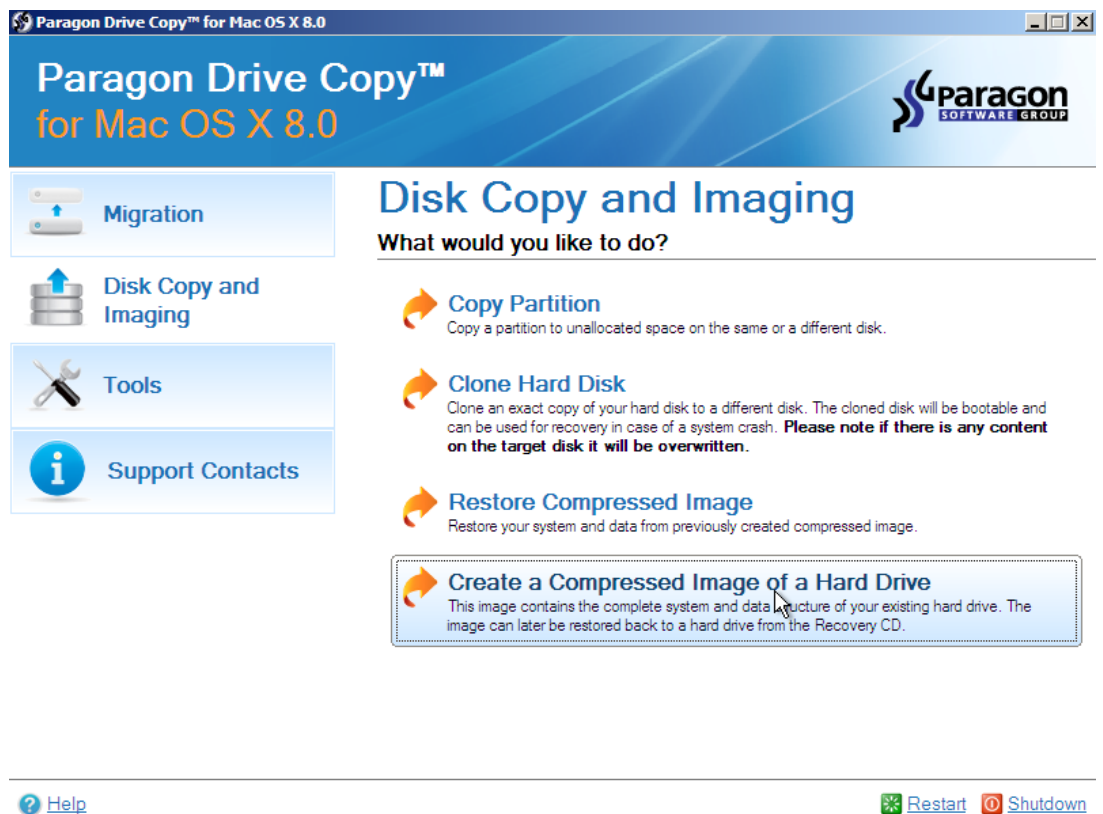
This chapter lists a number of the most frequently used scenarios that may be accomplished with the program. You can find here useful recommendations and descriptions of operations.

BACKUP SCENARIOS

BACKING UP A HARD DISK OR PARTITION TO A NETWORK DRIVE

To back up an entire hard disk or a separate partition and then place the resulted image to a network share, please do the following:

1. Launch the **Simple Backup Wizard**.



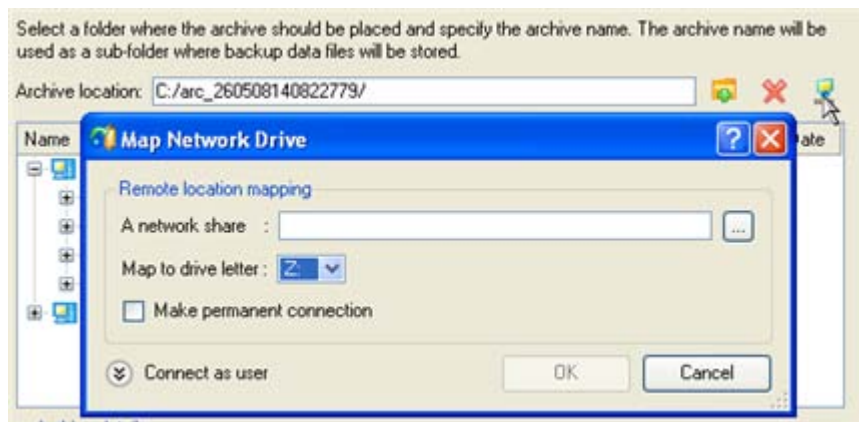
2. On the Wizard's Welcome page, click the Next button.
3. On the What to back up page, mark the appropriate option opposite a hard disk's name or a partition's name depending on the chosen task.

Name	Type	File system	Size	Used
My Computer	My Computer			
Basic Hard Disk 0 (Maxtor 7Y250P0)	Basic Hard Disk Drive		233.7 GB	
First Hard Disk Track	First Track		0 Bytes	
Master Boot Record	MBR		0 Bytes	
Local Disk (F:)	Primary	NTFS	233.7 GB	154.7 G
Basic Hard Disk 1 (ST3160815AS)	Basic Hard Disk Drive		149 GB	
First Hard Disk Track	First Track		0 Bytes	
Master Boot Record	MBR		0 Bytes	
System (C:)	Primary	NTFS	19.5 GB	13 G
Applications (D:)	Primary	NTFS	63.4 GB	6 G
Other Stuff (E:)	Primary	NTFS	66 GB	16.7 G

The size of objects to back up: **19.5 GB**
Estimated archive size **10.4 GB**

4. Map a network disk to place your *backup image* to:

- Call the Map Network Drive dialog by clicking the appropriate button;



- Click the standard browse button [...] to browse for the required network share or manually enter a path to it;
- Define a letter from the pull-down list of available drive letters;
- Mark the checkbox to make this connection permanent. Otherwise it will only be available for the current Windows session;
- Click the Connect as user button at the foot of the dialog page to specify a user name and password to access the selected network share if necessary.

5. Edit the archive name if necessary.

Archive details

Archive name:

Estimated archive size: **6.8 GB**

Space available on backup destination: **11.1 GB**



Please take into account values of the parameters **Estimated archive size** and **Space available on backup destination** - if the archive size exceeds the available space, another network drive needs to be selected.

6. Click the Next button to start the backup process.

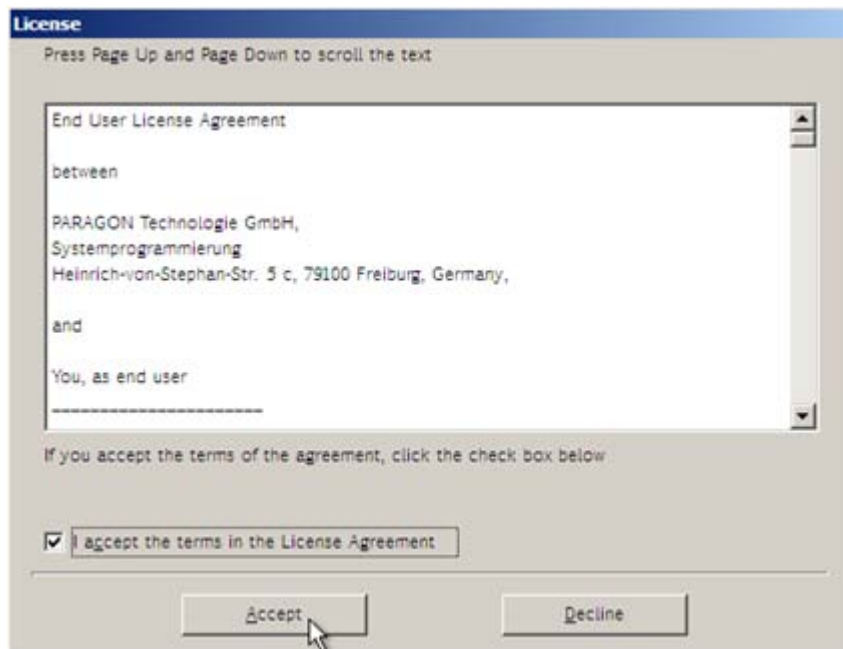
RECOVERY SCENARIOS

RESTORING A SYSTEM PARTITION FROM A NETWORK DRIVE

Let's assume that your computer fails to boot because of a virus attack or corruption of some system critical files. But you've got a backup of your hard disk on a remote backup server. That's just enough to easily get your system back on track again.

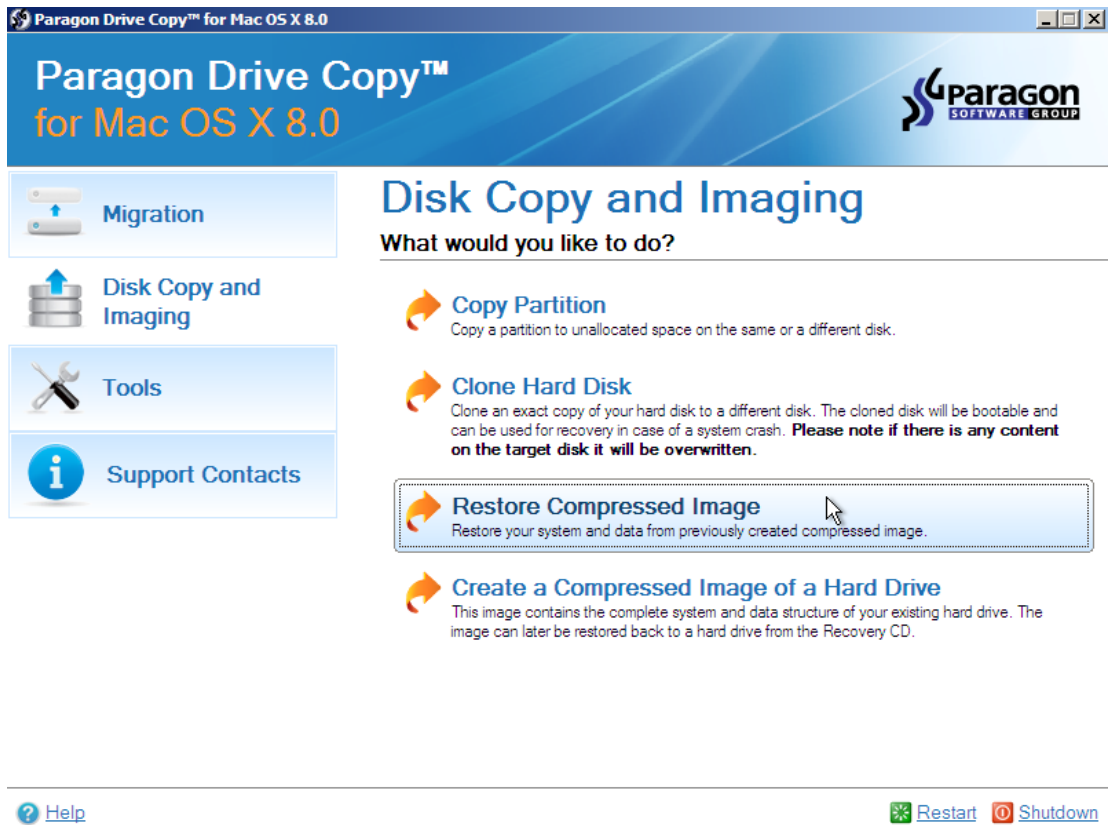
To restore your system partition from a *backup image* located on a network drive, please do the following:

1. Insert Paragon WinPE Recovery CD (the BIOS must be enabled to boot the system from the CD/DVD device).
2. Restart the computer.
3. After the disc has been loaded, read the agreement and then mark the appropriate checkbox to accept.

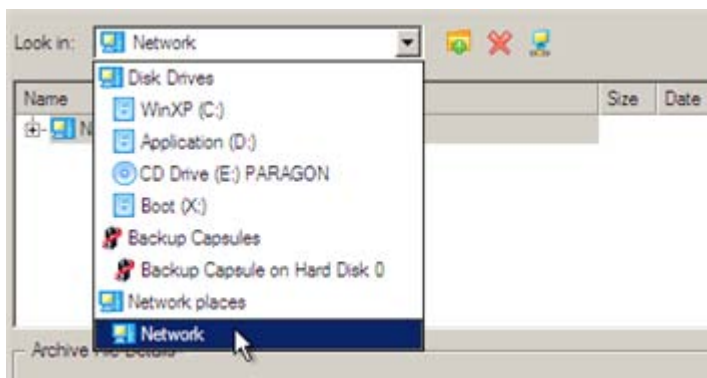


If you do not agree with any conditions stated there, you won't be able to use the program.

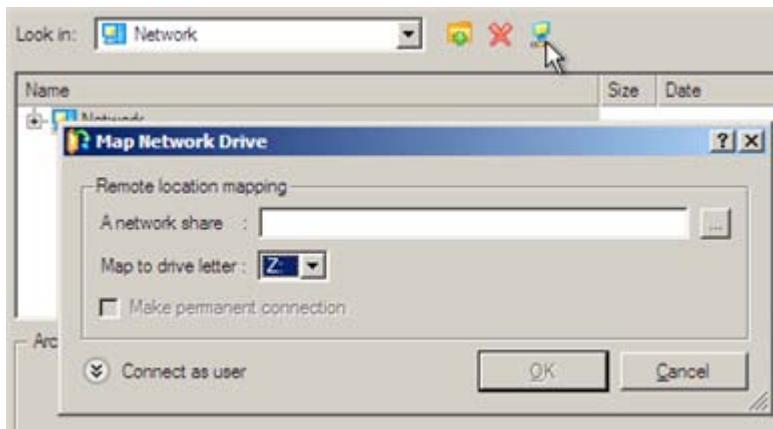
4. Once you accept the agreement, you will see the Universal Application Launcher. Select the Restore Wizard.



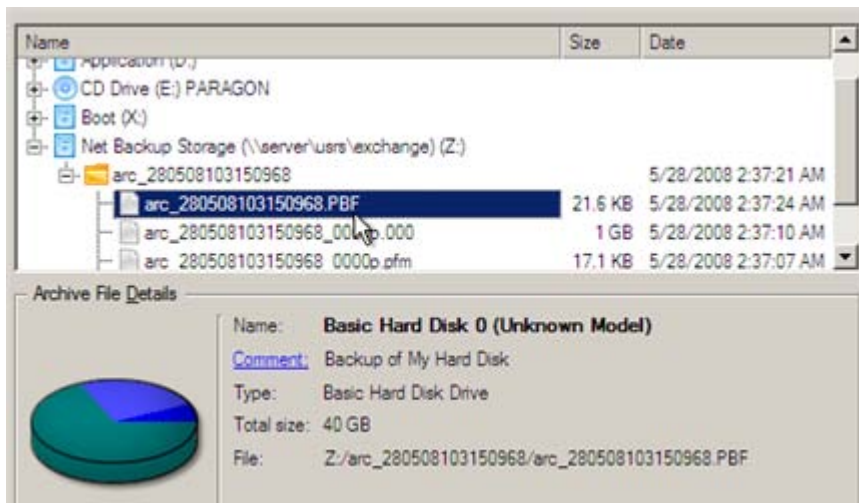
5. On the Restore Wizard's Welcome page, click the Next button.
6. On the Browse for Archive page you need to specify the required backup image. So you should take the following steps to do that:
 - Select **Network** as a backup destination;



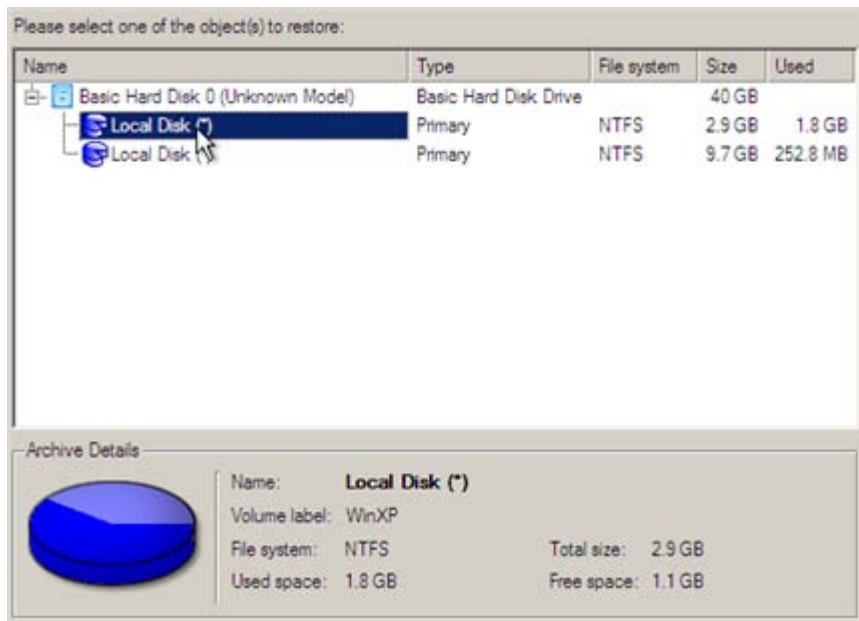
- Map a network disk where your archives are placed:
- Call the Map Network Drive dialog by clicking the appropriate button;



- Click the standard browse button [...] to browse for the required network share or manually enter a path to it;
- Define a letter from the pull-down list of available drive letters;
- Click the Connect as user button at the foot of the dialog page to specify a user name and password to access the selected network share if necessary.
- Choose the required archive in the browser-like window. The Archive File Details section displays a short description of the selected image.



7. The What to Restore page displays detailed information about the contents of the archive. Select the required item to restore. In our case it is the first partition of the disk.

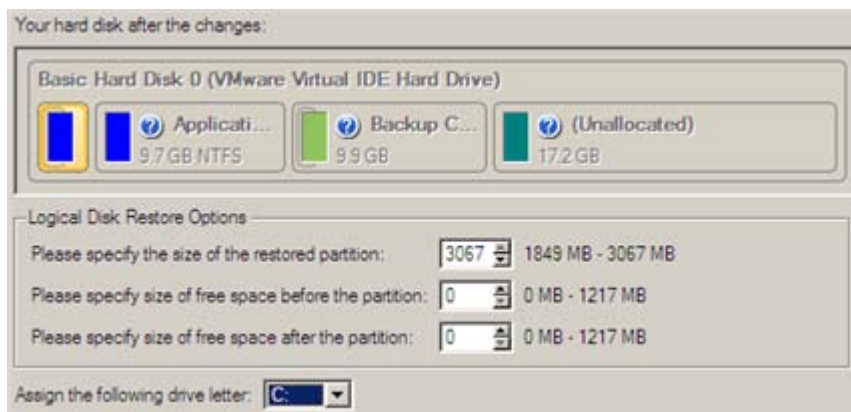


- On the Where to Restore page specify a hard disk, then one of its partitions to restore the image to (if several in your computer). By default, the program offers to restore the archive exactly where it belongs. That's what we actually need.

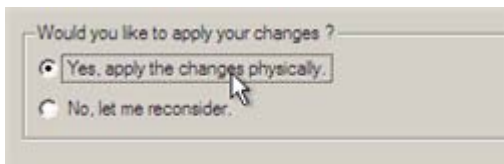


All contents on the partition selected for restoring purposes will be deleted during the operation.

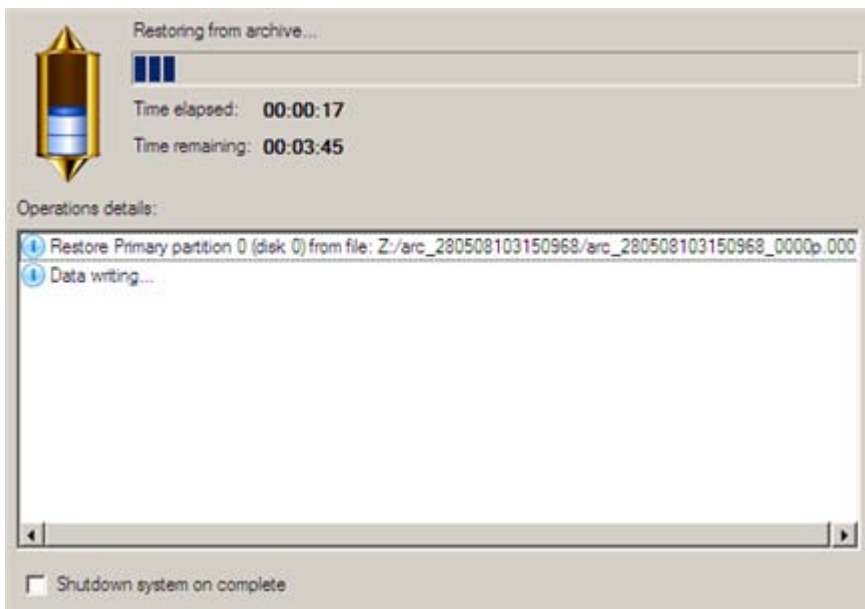
- On the Restore Results page you can see the resulted disk layout. Besides there's the possibility to change size of the partition and its location if necessary as well as assign a particular drive letter.



10. On the next page of the wizard confirm the operation by selecting the appropriate option.



11. In the Progress window you can see in real-time a detailed report on all actions carried out by the program.



Mark the checkbox at the bottom of the window to automatically switch off the computer on the successful accomplishment of the restore operation.

12. After completing the operation close the wizard, take out the disc and then reboot the computer.



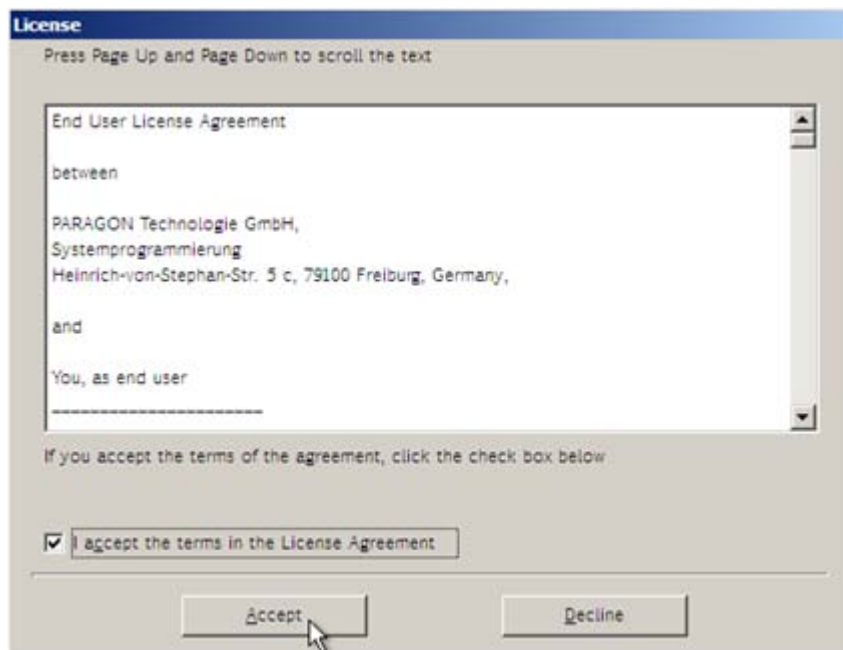
This operation can also be accomplished with the Linux/DOS recovery environment.

To make a Win2K+ operating system bootable on different hardware, please additionally complete the [Adjust Windows® to boot on new Mac.](#)

COPYING OF DATA FROM THE CORRUPTED SYSTEM DISK TO ANOTHER HARD DISK

To retrieve valuable information from your hard disk and copy it to another hard disk when the system fails to boot, please do the following:

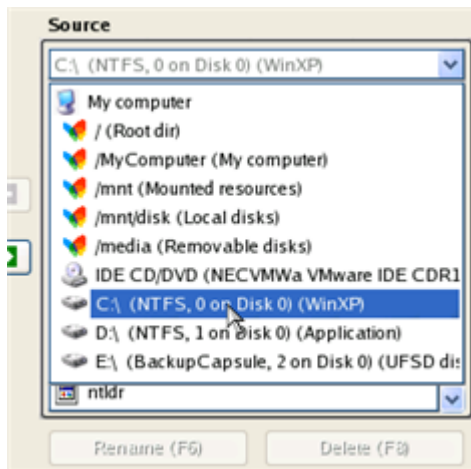
1. Connect the second hard disk to the computer.
2. Insert the Paragon Disk Copy for Mac OS X CD into a CD/DVD drive.
3. Reboot the computer and select this CD as startup device.
4. After the disc has been loaded, you will see the License Agreement. Read the agreement and then mark the appropriate checkbox to accept. If you do not agree with any conditions stated there, you won't be able to use the program.



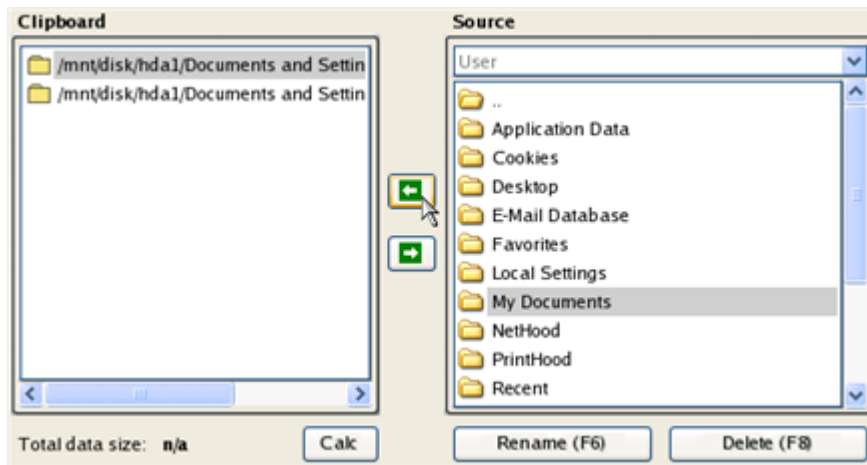
5. Once you accept the agreement, you will see the Universal Application Launcher. In general it enables to run components of the product, load drivers for undefined hardware or establish a network connection.
6. In the **Tools** menu select the File Transfer Wizard.



5. On the Wizard's Welcome page, click the Next button.
6. Select a disk where the files you need are stored from the pull-down list in the right pane of the page.



7. Select files you want to copy and place them to Clipboard by pressing the left arrow-button.



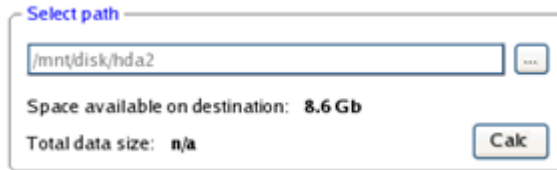
Click the Calc button to estimate the resulted data size.

8. On the Select Destination Type, choose the way the data will be stored. Select the **Save data to any local drive or a network share** item.

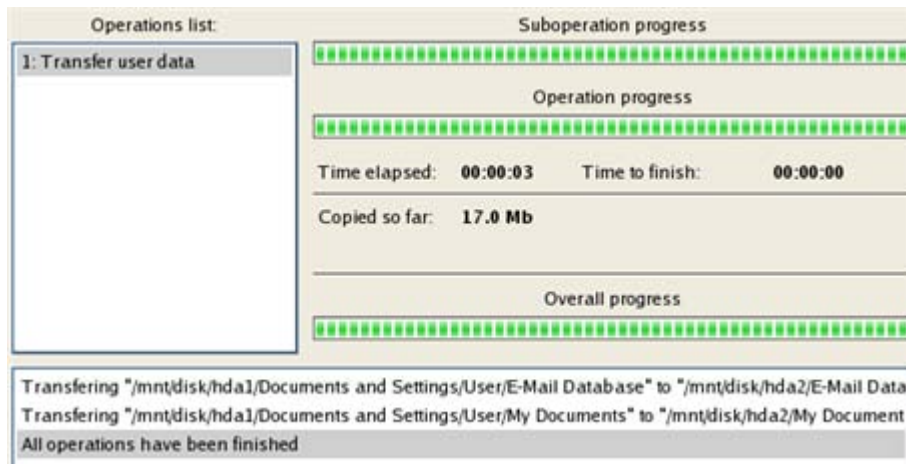
Please select how would you like to save the data:

- Save data to any local drives or a network share**
Choose this option if you want to save your data to local mounted or physical partition, to USB or FireWare external drives and to a mounted network share. You will be prompted to choose a location you want to save the archive to.
- Burn data to CD/DVD**
Choose this option if you want the Wizard to burn the data to CD or DVD. You will be prompted to choose a CD or DVD RW drive.

9. On the Select Destination Path page, select a hard disk to copy the data to by pressing the standard browse button [...].



10. On the Transfer Summary page check all parameters of the operation. Click the Next button to accomplish the operation.
11. In the Progress window you can see in real-time a detailed report on all actions carried out by the program.

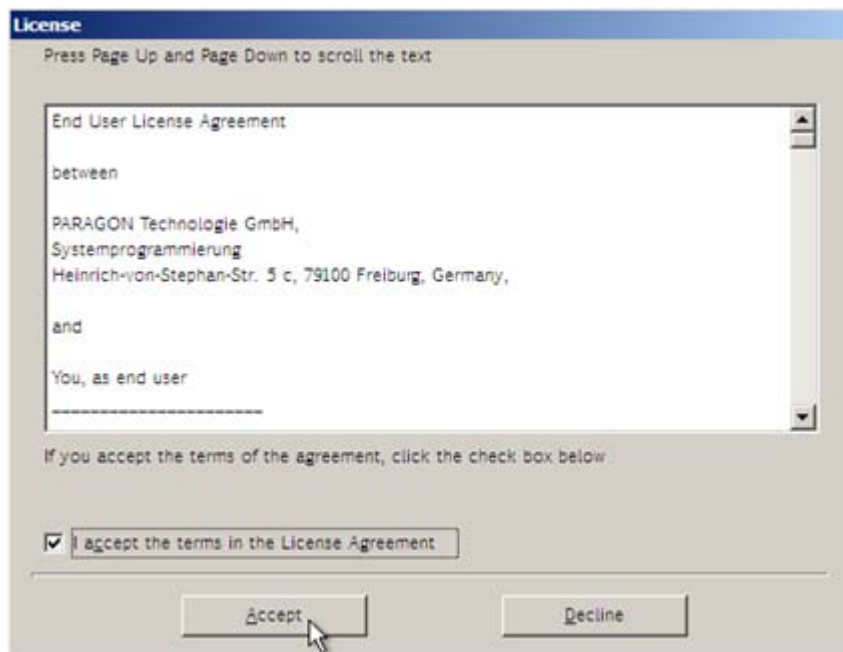


12. After the operation is completed, close the wizard by pressing the appropriate button.
13. Eject the CD.
14. Turn off the computer.

BURNING OF DATA FROM THE CORRUPTED SYSTEM DISK TO CD/DVD

To retrieve valuable information from your hard disk and burn it to CD/DVD when the system fails to boot, please do the following:

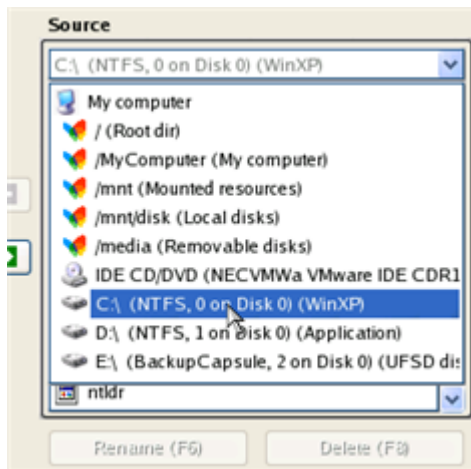
1. Insert the Paragon Disk Copy for Mac OS X CD into a CD/DVD drive.
2. Reboot the computer and select this CD as startup device.
3. After the disc has been loaded, you will see the License Agreement. Read the agreement and then mark the appropriate checkbox to accept. If you do not agree with any conditions stated there, you won't be able to use the program.



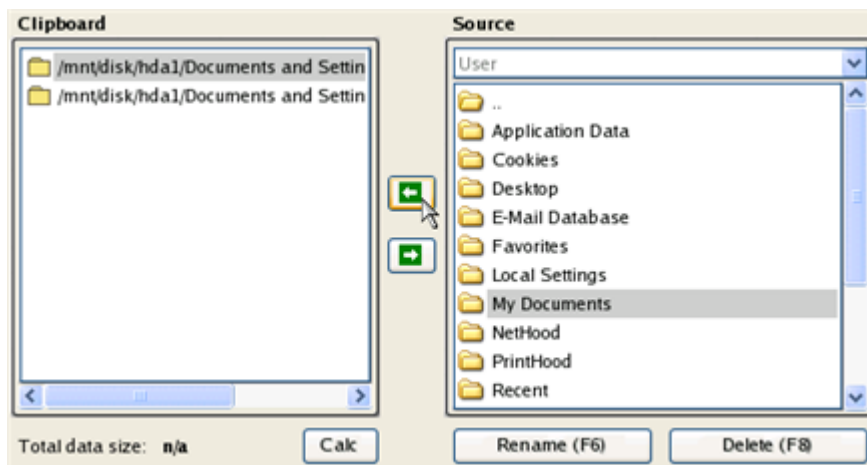
- Once you accept the agreement, you will see the Universal Application Launcher. In general it enables to run components of the product, load drivers for undefined hardware or establish a network connection.
- In the **Tools** menu select the File Transfer Wizard.



- On the Wizard's Welcome page, click the Next button.
- Select a disk where the files you need are stored from the pull-down list in the right pane of the page.



6. Select files you want to copy and place them to Clipboard by pressing the left arrow-button.



Click the Calc button to estimate the resulted data size.

7. On the Select Destination Type, choose the way the data will be stored. Select the **Burn data to CD/DVD** item.

Please select how would you like to save the data:

- Save data to any local drives or a network share**
Choose this option if you want to save your data to local mounted or physical partition, to USB or FireWare external drives and to a mounted network share. You will be prompted to choose a location you want to save the archive to.
- Burn data to CD/DVD**
Choose this option if you want the Wizard to burn the data to CD or DVD. You will be prompted to choose a CD or DVD RW drive.

8. On the Choose a Recorder page, select a recorder from the list of available devices and then set a volume label by entering it in the appropriate field.

Select a recorder to burn data to:

Vendor	Product	Type
Optiarc	DVD RWAD-7170A	CD-R; CD-RW; DVD-R

Volume label:

- On the Transfer Summary page check all parameters of the operation. Click the Next button to accomplish the operation.
- In the Progress window you can see in real-time a detailed report on all actions carried out by the program.

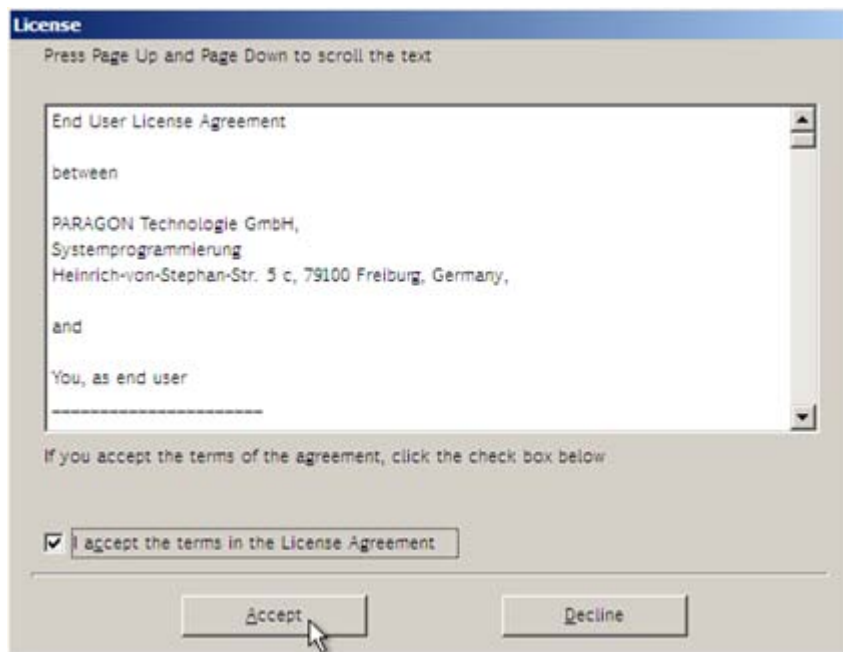
Operations list:	Suboperation progress
<div style="border: 1px solid gray; padding: 2px;">1: Transfer user data</div>	<div style="border: 1px solid gray; height: 15px; width: 100%;"></div>
	Operation progress <div style="border: 1px solid gray; height: 15px; width: 100%; background-color: #e0ffe0; margin-bottom: 5px;"></div>
	Time elapsed: 00:00:07 Time to finish: 00:00:16
	Copied so far: 5.0 Mb To copy: 12.0 Mb
	Overall progress <div style="border: 1px solid gray; height: 15px; width: 100%; background-color: #e0ffe0; margin-bottom: 5px;"></div>
Creating compilation image... Used burner: DVD RWAD-7170A Vendor: Optiarc Session opening... <div style="background-color: #e0ffe0; padding: 2px;">Data burning...</div>	

- After the operation is completed, close the wizard by pressing the appropriate button.
- Eject the CD.
- Turn off the computer.

COPYING OF DATA FROM A BACKUP TO THE CORRUPTED SYSTEM PARTITION

The system fails to boot since some files are damaged. If you have a backup of the system partition, you can recopy these files to make the system be operable again:

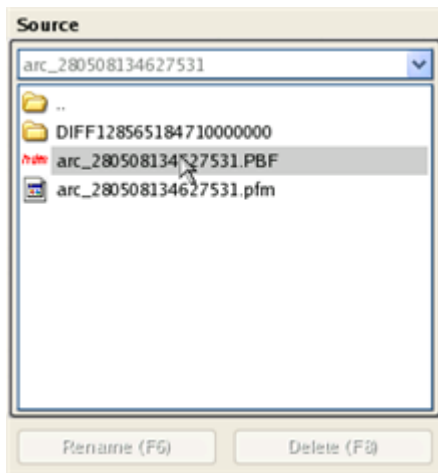
- Insert the Paragon Disk Copy for Mac OS X CD into a CD/DVD drive.
- Reboot the computer and select this CD as startup device.
- After the disc has been loaded, you will see the License Agreement. Read the agreement and then mark the appropriate checkbox to accept. If you do not agree with any conditions stated there, you won't be able to use the program.



4. Once you accept the agreement, you will see the Universal Application Launcher. In general it enables to run components of the product, load drivers for undefined hardware or establish a network connection.
5. In the **Tools** menu select the File Transfer Wizard.

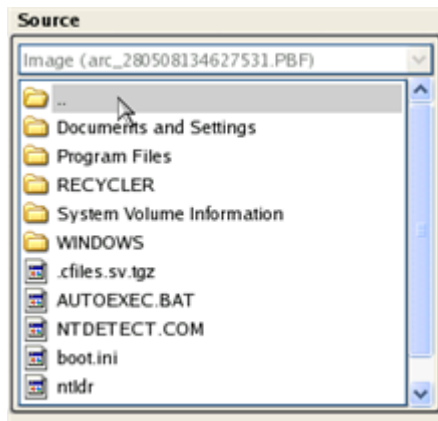


6. On the Wizard's Welcome page, click the Next button.
7. Select a disk where the system backup is stored from the pull-down list in the right pane of the page.

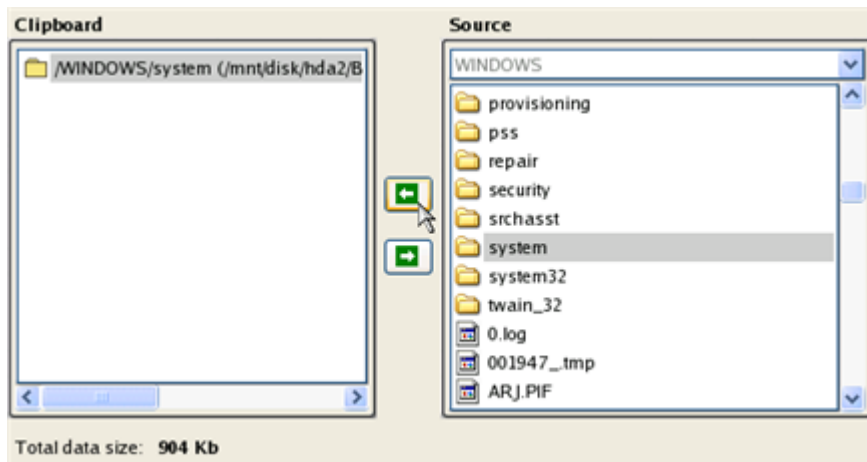


8.

9. Double click on the required backup to open.



10. Select files you want to copy and place them to Clipboard by pressing the left arrow-button.



Click the Calc button to estimate the resulted data size.

11. On the Select Destination Type, choose the way the data will be stored. Select the **Save data to any local drive or a network share** item.

Please select how would you like to save the data:

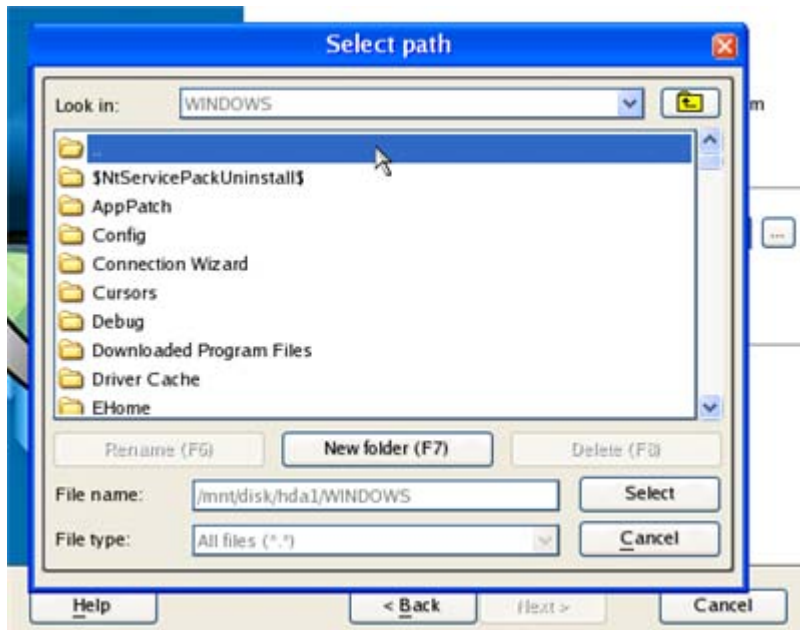
Save data to any local drives or a network share

Choose this option if you want to save your data to local mounted or physical partition, to USB or FireWare external drives and to a mounted network share. You will be prompted to choose a location you want to save the archive to.

Burn data to CD/DVD

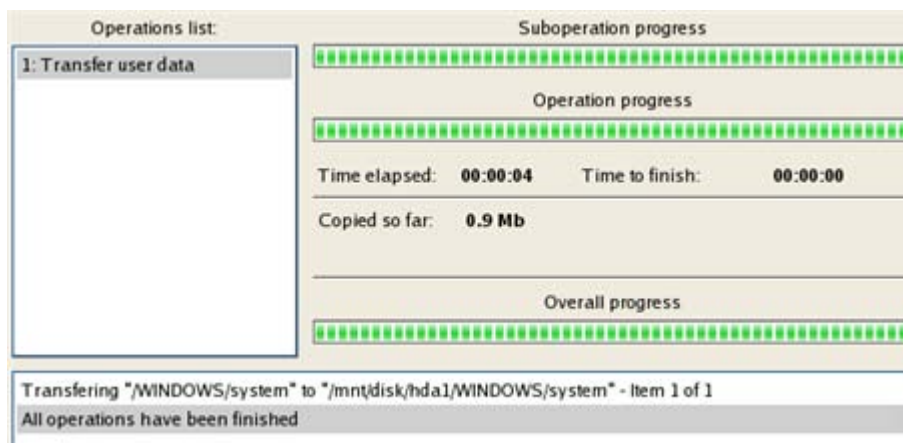
Choose this option if you want the Wizard to burn the data to CD or DVD. You will be prompted to choose a CD or DVD RW drive.

12. On the Select Destination Path page, select your system disk to copy the data to by pressing the standard browse button [...].



13. On the Transfer Summary page check all parameters of the operation. Click the Next button to accomplish the operation.

14. In the Progress window you can see in real-time a detailed report on all actions carried out by the program.



15. After the operation is completed, close the wizard by pressing the appropriate button.

16. Eject the CD.

17. Turn off the computer.

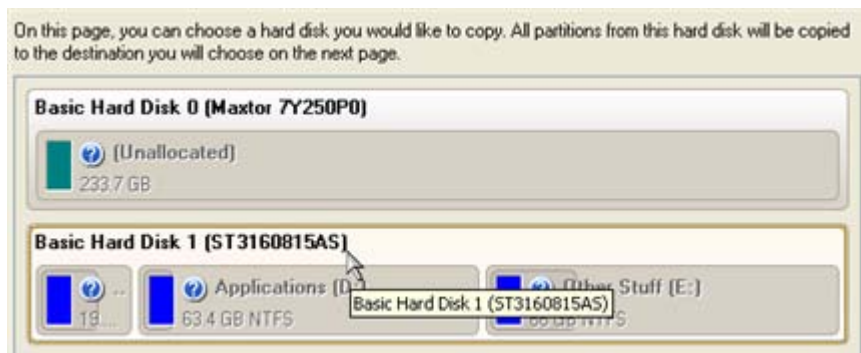
CLONING SYSTEM HARD DISK

To migrate your system hard disk to a larger disk, please do the following:

1. Connect both source and destination disks to the computer.
2. Turn on the computer.
3. Launch the **Copy Hard Disk Wizard**.



4. On the Wizard's Welcome page, click the Next button.
5. On the Select Hard Disk to Copy page, select a source disk (a hard disk you want to copy).

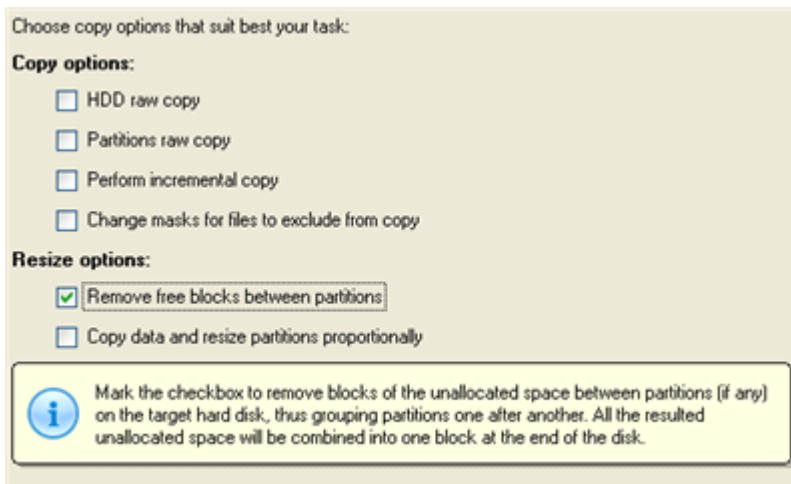


6. On the Select Target Hard Disk page, select a destination disk (a hard disk to copy contents of the source disk).

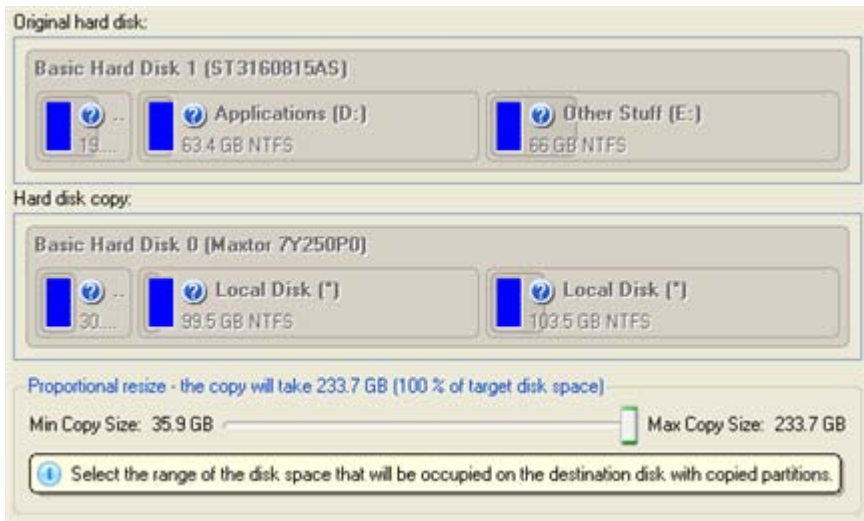


During the operation all contents of the destination disk will be deleted.

7. On the next page of the wizard, define the copy options. In our case we'd rather copy data with a proportional resize to occupy the entire disk.



8. On the Revise Copy Results page review all parameters of the operation.



9. Complete the wizard.
10. When copying is completed, shut down the computer.

11. Disconnect (physically) the source hard disk.
12. Boot the computer from the destination hard disk.



To make a Win2K+ operating system bootable on different hardware, please additionally complete the [Adjust Windows® to boot on new Mac](#).

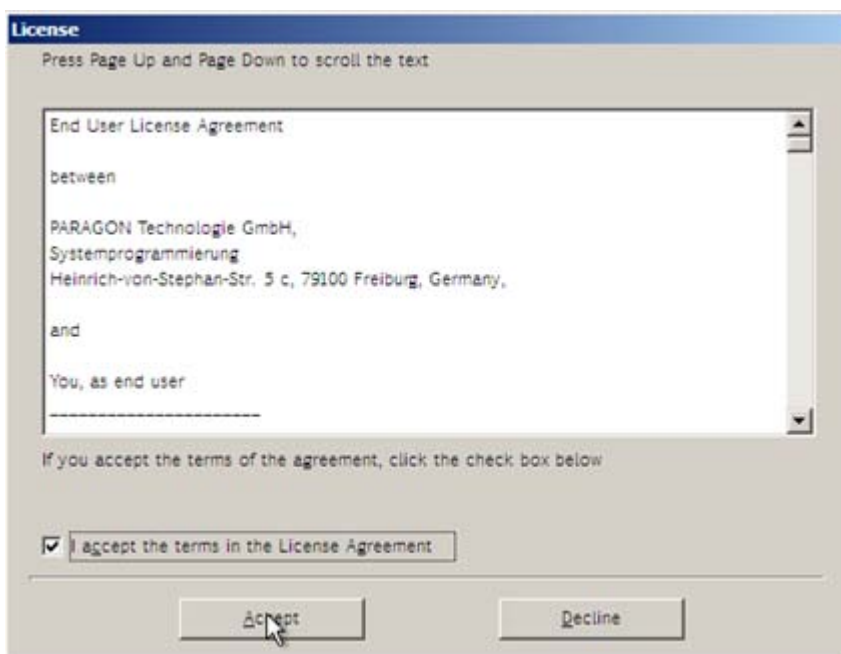
P2P SCENARIOS

MAKING WINDOWS BOOTABLE ON DIFFERENT HARDWARE

Let's assume you had to migrate to a new hardware platform. You just connected your system hard disk to the brand new PC and tried to start up the operating system - you do know for sure now that this operation had been doomed to failure from the very beginning. With our program you can easily tackle this naughty problem.

To recover bootability after migrating your physical system to different hardware, please do the following:

1. Insert WinPE CD (the BIOS must be enabled to boot the system from the CD/DVD device).
2. Restart the computer.
3. After the disc has been loaded, read the agreement and then mark the appropriate checkbox to accept.



If you do not agree with any conditions stated there, you won't be able to use the program.

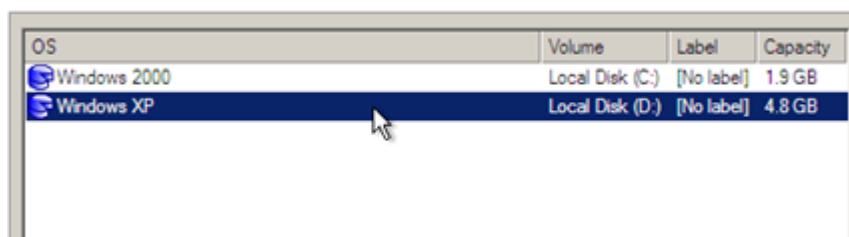
- Once you accept the agreement, you will see the Universal Application Launcher. Launch the **Adjust Windows® to boot on new Mac**.



Our WinPE 2.1 based CD offers excellent hardware support. However in case it doesn't have a driver for your disk controller, your hard disks will be unavailable. Please consult the [Adding specific drivers](#) scenario to know how to tackle this issue.



- On the Wizard's Welcome page, click the Next button.
- From the list of all found Windows based operating systems (if several) select one you need to adjust to your new hardware. If you're willing to adjust them all, just re-launch this wizard for each.





The wizard can only work with Microsoft Windows 2000 and later operating systems.

7. Choose whether you're going to add drivers for the new hardware to the selected operating system or not and the way it's to be done. Actually you've got three options:
 - **Upload drivers automatically from the provided driver repository.** Generally together with new hardware you get its drivers for different operating systems on removable media (mostly CD or DVD). By collecting all these drivers in one folder you can let the wizard automatically pick and install only those required for your OS (recommended);
 - **Upload drivers manually.** If you know exactly what drivers your operating system is lacking to successfully start up, you can manually provide them for the wizard.
 - **Do not upload drivers.** And finally you can just refuse providing 3rd party drivers.

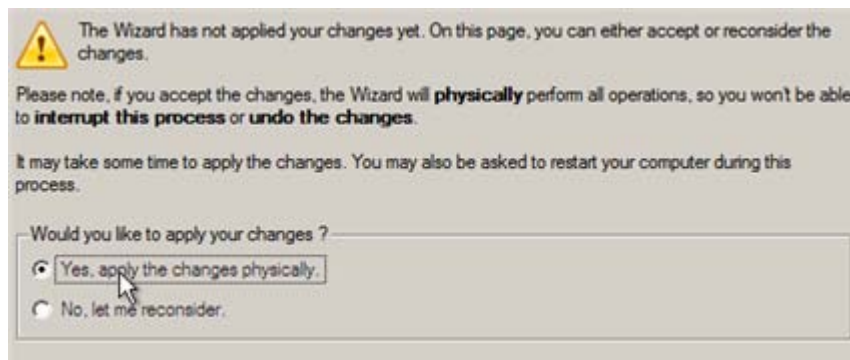


We prefer the wizard to decide what drivers are to be installed.

8. Browse for a folder with drivers for the new hardware or type in a full path to it manually.



9. Apply the changes by confirming the operation.



After the operation is completed your system will be bootable on the new hardware.

EXTRA SCENARIOS

ADDING SPECIFIC DRIVERS

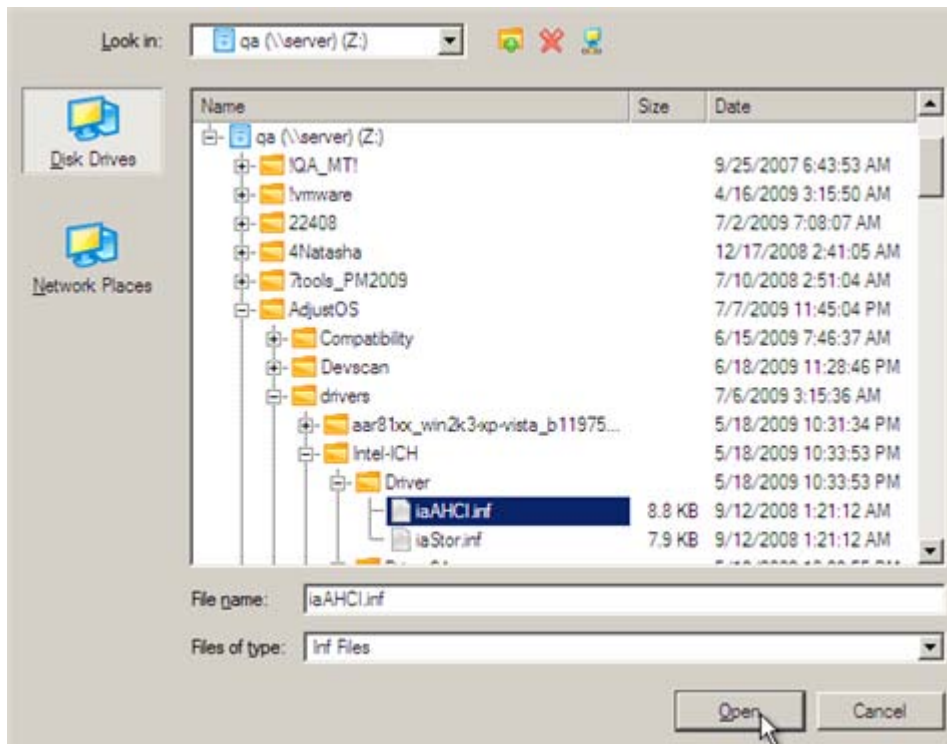
Our WinPE 2.1 based CD offers excellent hardware support. Anyway you've got the option to add drivers for specific hardware with a handy dialog.

To add drivers for specific hardware, please do the following:

1. Once you accept the agreement, you will see the Universal Application Launcher. Click **Add Drivers**.

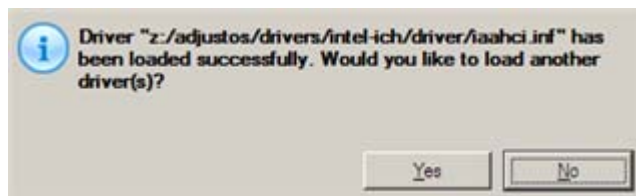


2. In the opened dialog browse for an .INF file of the required driver package located on a floppy disk, local disk, CD/DVD or a network share. Then click the **Open** button to initiate the operation



To know how to map a network share, please consult the [Configuring network](#) scenario.

3. You will be notified on the successful accomplishment of the operation. Click **Yes** to load another driver or **No** to close the dialog.



Our WinPE 2.1 recovery environment is 32-based, thus you need to use 32-bit drivers for injection.

CONFIGURING NETWORK

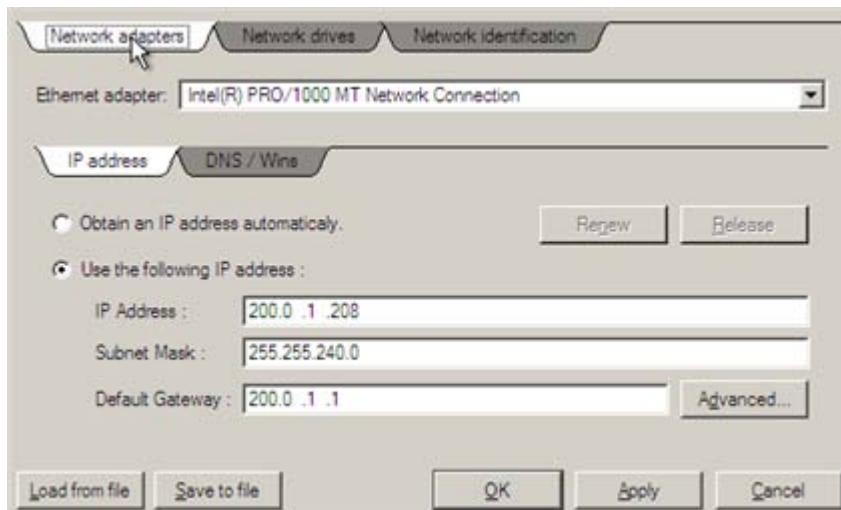
If your local network has a DHCP server, a network connection will be automatically configured once our WinPE CD has been started up. Otherwise you will need to do it manually with a handy dialog by providing an IP address, a network mask, default gateway, etc. Besides with its help you can easily map network shares.

To manually set up a network connection and map a network share, please do the following:

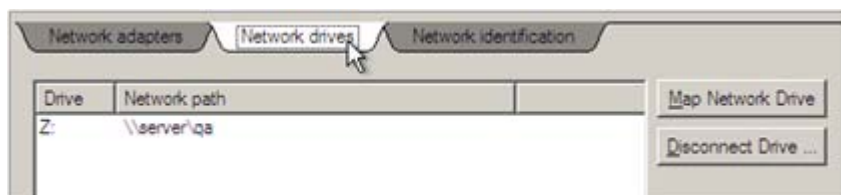
1. Once you accept the agreement, you will see the Universal Application Launcher. Click **Configure Network**.



2. In the opened dialog provide an IP address, a network mask, default gateway, etc. for your network device.



3. Click the **Network drivers** tab to map a network share.



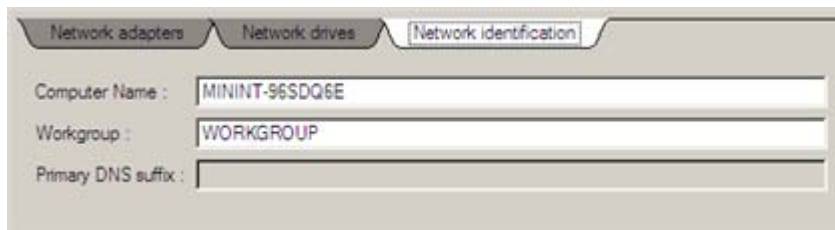
4. Click **Map Network Drive** and provide all the necessary information to map a network share in the opened dialog:



- Click the standard browse button [...] to browse for the required network share or manually enter a path to it;
- Define a letter from the pull-down list of available drive letters;
- Click the **Connect as user** button at the foot of the dialog page to specify a user name and password to access the selected network share if necessary.

By clicking **Disconnect Drive...** you can delete an existing network share if necessary.

5. Click the **Network identification** tab to change a network name of your computer (generated automatically) and a workgroup name.



6. By default, the wizard saves all network settings in the netconf.ini file located on the WinPE RAM drive, thus it will only be available until you restart the computer. However, you can just once configure your network device and then save this file to some other destination, for instance a local drive, and this way avoid constant re-configuration, just by providing a path to it. So Click **Save to file** to save the netconfig.ini file to the required destination.

SAVING LOG FILES

The program enables to simplify the procedure of sending support requests to the Paragon Support Team. In case of having difficulties with handling the program, you, with the help of this very function, can address the company support engineers and provide them with all the information they need such as the disk layout, performed operations, etc. in order to tackle the encountered problem. Information of that kind is stored in log files.

To prepare a log files package, please do the following:

1. Once you accept the agreement, you will see the Universal Application Launcher. Click **Log Saver**.

Paragon Drive Copy™
for Mac OS X 8.0

Migration

Disk Copy and Imaging

Tools

Support Contacts

Tools

What would you like to do?

File Transfer Wizard
Transfer files and folders from any supported file system, or extract content from images of a hard drive.

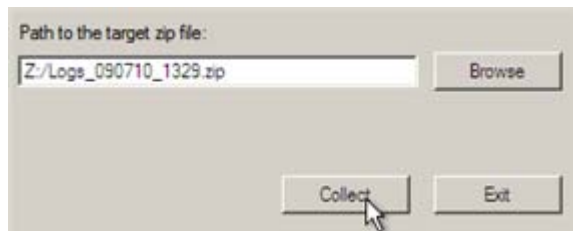
Log Saver
Prepare log files of the operation to send to Paragon Support Team.

Add Drivers
Load drivers from a local disk, floppy, CD/DVD or network to current advanced recovery environment instance.
Please note, this recovery environment is 32-bit based, so you need to use 32-bit drivers.

Configure Network
Set up network parameters or map a shared folder.

[Help](#) [Restart](#) [Shutdown](#)

2. In the opened dialog browse for the required location of the log files package or manually provide a full path to it. Click **Collect** to initiate the operation.



Log files do not contain any confidential information on the operating system settings or the user documents.

Troubleshooter

Here you can find answers to the most frequently asked questions that might arise while using the program.

1. I cannot copy a partition.

There can be a number of reasons for that:

- The source or target disk you select is a dynamic disk;
- 4 primary partitions (or three primary partitions and an extended one) already exist on the target disk.

2. I need to copy a partition. But when selecting a place where to make a copy, I always get a crossed circle sign no matter which partition is selected.

The program enables to copy a partition only to a block of un-partitioned space. If you don't have a block of free space on your hard disk, please delete or reduce an existing partition to accomplish the operation.

3. When trying to back up to a network share, I get the following error: "i/o error" or "can't open/create file"

Please check whether you've got a permission to write to the selected destination or not.

4. When trying to restore a backup archive, I get the following error: "Can't restore to current selection" or "Archive does not fit"

Most likely you're trying to restore a backup of the whole hard disk to a partition or vice versa.